



Surround Panner
for Avid Pro Tools HD™



Users Manual



AXOS and AXOS Surround Panner are trademarks of JLC Cooper Electronics. All other brand names are the property of their respective owners.

AXOS User Manual, Second Edition, November 12, 2015

Part Number 932139

©2015 JLC Cooper Electronics, 142 Arena Street, El Segundo, CA 90245 USA

Voice +1 (310) 322-9990 FAX +1 (310) 335-0110

www.jlcooper.com

Introduction

Thanks for purchasing the AXOS Surround Panner. The AXOS Surround Panner is designed to provide years of use in your studio.

The AXOS Surround Panner is a USB 2.0, class compliant MIDI peripheral that works on Windows, OS X and Linux without the need for any additional driver software. It is USB powered and does not require an external power adapter. It's 2 meter cable is permanently attached so there is no cable to loose.

Due to the evolving nature of software development, the latest drivers, plug-ins and installation guides can be found on the JLCooPer website at the following location:

www.jlcooper.com

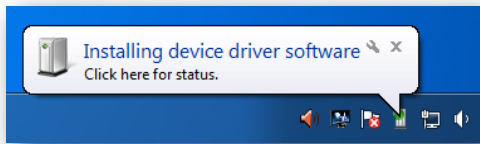
Click on the Support tab to access the latest drivers, software and documentation.

Installation

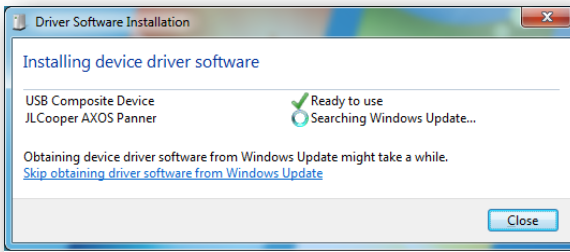
Installing the AXOS Surround Panner is as simple as plugging in a mouse. Simply plug the AXOS Surround Panner into an available USB port on your computer and allow the operating system to configure itself.

Windows

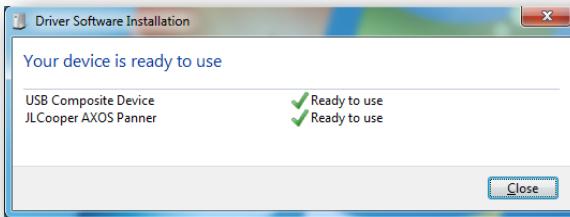
When you plug in the AXOS Surround Panner into your Windows computer for the first time, the Driver Software Installation Wizard will appear in the Notification Area. Click on the text bubble to display the installation status.



When you open the Driver Software Installation status, you will see two drivers for the AXOS Surround Panner.



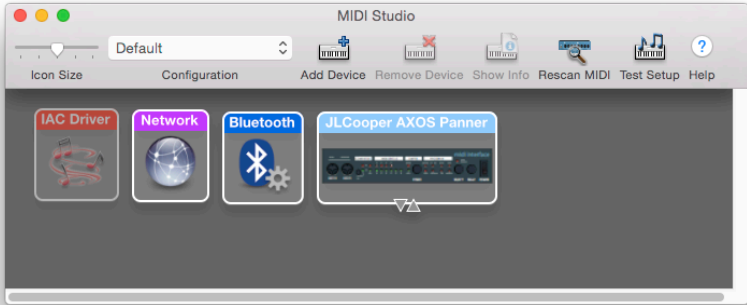
After Windows has completed configuring the drivers, the AXOS Surround Panner will be ready to use.



OS X

Simply plug the AXOS Surround Panner into your computer and OS X will configure itself with a new MIDI port.

In MIDI Studio, you will see the following new device added.

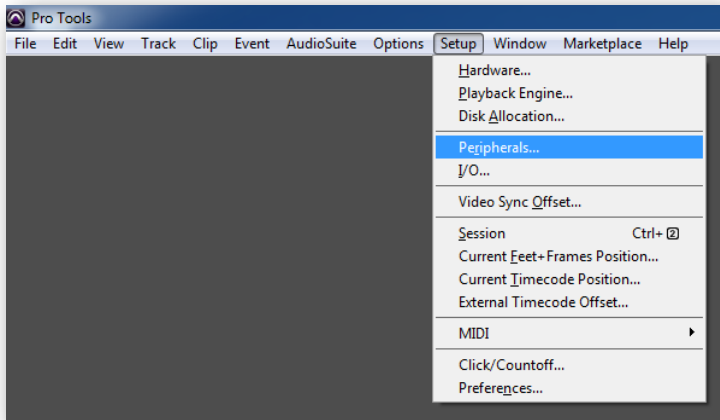


Pro Tools

The AXOS Surround was specifically designed to work with Avid Pro Tools HD 8, 9, 10, 11 and 12. Non HD systems do not support surround sound outputs.

Configuring and using Pro Tools in Windows and OS X is similar so the instructions below apply to both platforms.

To install the AXOS Surround Panner in Pro Tools HD, go to the Menu Bar and click on **Peripherals...**



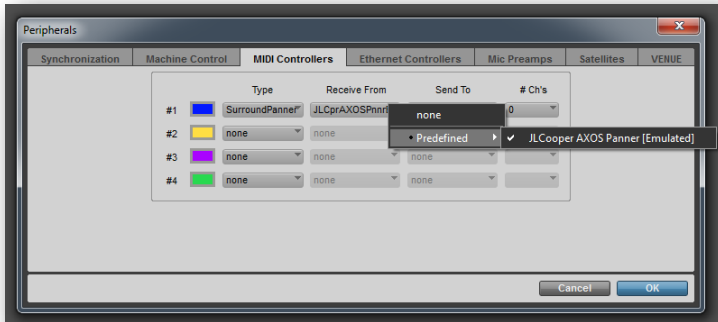
Note: These screenshots are similar for both Windows and OS X versions of Pro Tools.

In the **Peripherals...** dialog box, click the **MIDI Controllers** tab.

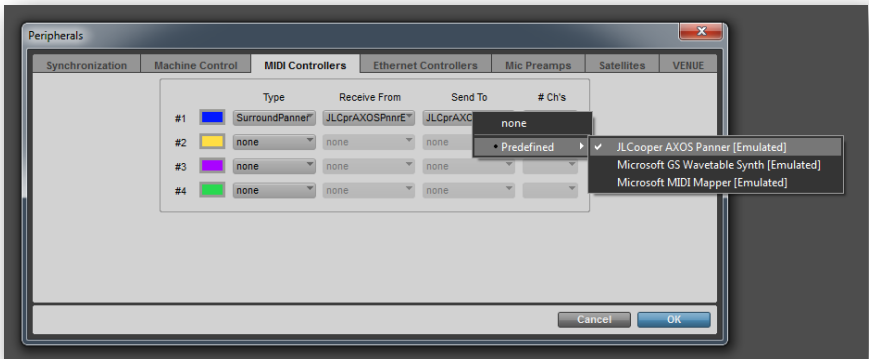
In the MIDI Controllers box, perform the following steps:

In the Type column, click the drop down box and select **Surround Panner**.

In the Receive From column, click the drop down box and select **JLCooper AXOS Panner**.



In the Send To column, click the drop down box and select **JLCooper AXOS Panner**.



Click **OK**.

Your AXOS Panner is now ready to use. For details on how to use the AXOS Surround Panner with Pro Tools, please refer to the *Pro Tools Surround Panner Option Guide*.

JLCooper Limited Warranty

JLCooper Electronics ("JLCooper") warrants this product to be free of defects in materials or workmanship for a period of 12 months from the date of purchase. This warranty is non-transferable and the benefits apply only to the original owner. Proof of purchase in the form of an itemized sales receipt is required for warranty coverage. To receive service under this warranty, customers in the United States should contact the JLCooper factory at (310) 322-9990 and talk to a service technician. If necessary, a Return Authorization number may be issued. For our customers outside the United States, it is recommended that you first contact your Dealer or Distributor, since they may offer their own service or support policy. If local support is not obtainable, please send a FAX to JLCooper's Service Department at +1 310 335 0110 with a detailed description of the service required. Upon issuance of return authorization, the product should be packed in the original shipping materials and shipped prepaid and insured to: Service Department, JLCooper Electronics, 142 Arena Street, El Segundo, CA 90245. Please include the following: copy of the sales receipt, your name and address (no P.O. Boxes, please), a brief description of the problem, and any other related items discussed with the service department and considered necessary to evaluate the product or effect a repair. The return authorization number must be clearly written on the outside of the package. JLCooper will at its option, without charge for parts or labor, either repair or replace the defective part(s) or unit. Carriage, insurance, customs duties, impounds, tariffs, taxes, surcharges, brokerage fees and other shipping costs are not covered by this warranty. JLCooper's normal repair turn around time at the factory is approximately 15 business days from receipt of product to shipping. Your actual turn around time will include return shipping. Actual turn around time will vary depending upon many factors including the repeatability of the customer's reported complaint, the availability of parts required for repair, the availability of related products needed to evaluate the product if necessary. Priority services are available at additional cost. These should be discussed with the service technician at the time the return authorization is issued. This warranty provides only the benefits specified and does not cover defects or repairs needed as result of acts beyond the control of JLCooper including but not limited to: abuse, failure to operate in accordance with the procedures outlined in this owner's manual; nor does it cover damage from accident, negligence, using incorrect power supply, modification, alteration, improper use, unauthorized servicing, tampering, ingress of foreign matter; nor for damage from natural or man-made events such as, but not limited to flooding, lightning, electrostatic discharge, tornadoes, earthquake, fire, civil unrest, war, terrorism, etc.

THE DURATION OF ANY OTHER WARRANTIES, WHETHER IMPLIED OR EXPRESS, INCLUDING BUT NOT LIMITED TO THE IMPLIED WARRANTY OF MERCHANTABILITY, IS LIMITED TO THE DURATION OF THE EXPRESS WARRANTY HEREIN. JLCOOPER HEREBY EXCLUDES INCIDENTAL AND CONSEQUENTIAL DAMAGES, INCLUDING BUT NOT LIMITED TO: LOSS OF TIME, INCONVENIENCE, DELAY IN PERFORMANCE OF THIS WARRANTY, THE LOSS OF USE OF THE PRODUCT OR COMMERCIAL LOSS, AND FOR BREACH OF ANY EXPRESS OR IMPLIED WARRANTY OF MERCHANTABILITY APPLICABLE TO THIS PRODUCT. JLCOOPER SHALL NOT BE LIABLE FOR DAMAGES OR LOSS RESULTING FROM THE NEGLIGENT OR INTENTIONAL ACTS OF THE SHIPPER OR HIS CONTRACT AFFILIATES. THE CUSTOMER SHOULD CONTACT THE SHIPPER FOR PROPER CLAIMS PROCEDURES IN THE EVENT OF DAMAGE OR LOSS RESULTING FROM SHIPMENT. THIS WARRANTY SHALL BE GOVERNED BY THE LAWS OF THE STATE OF CALIFORNIA.