

Steinberg Nuendo 2 for Windows Shuttle Setup Instructions

1. Verify that the Steinberg Nuendo 2 application setting is installed within the Shuttle control panel. This setting is included with Shuttle driver version 2.5.7 and later. Updating your driver will automatically install this setting and ensure you have the most current software.
 - a. Open the Shuttle Control Panel.
 - b. Click the Application Setting drop-down menu and confirm that "Steinberg Nuendo 2" is in the list.
2. Configure the Key Commands in Steinberg Nuendo 2.
 - a. From the main menu choose File, Key Commands.
 - b. Load the Alternative Key Set named "Shuttle". This will load the key commands for the 14 Shuttle Play commands located in the Transport folder (Fig. 1).
 - c. Expand the Transport folder.
 - d. Assign "Ctrl+Shift+Left" to Jog Left (Fig. 2).
 - e. Assign "Ctrl+Shift+Right" to Jog Right (Fig. 2).
 - f. Click "OK" to close the Key Commands window.

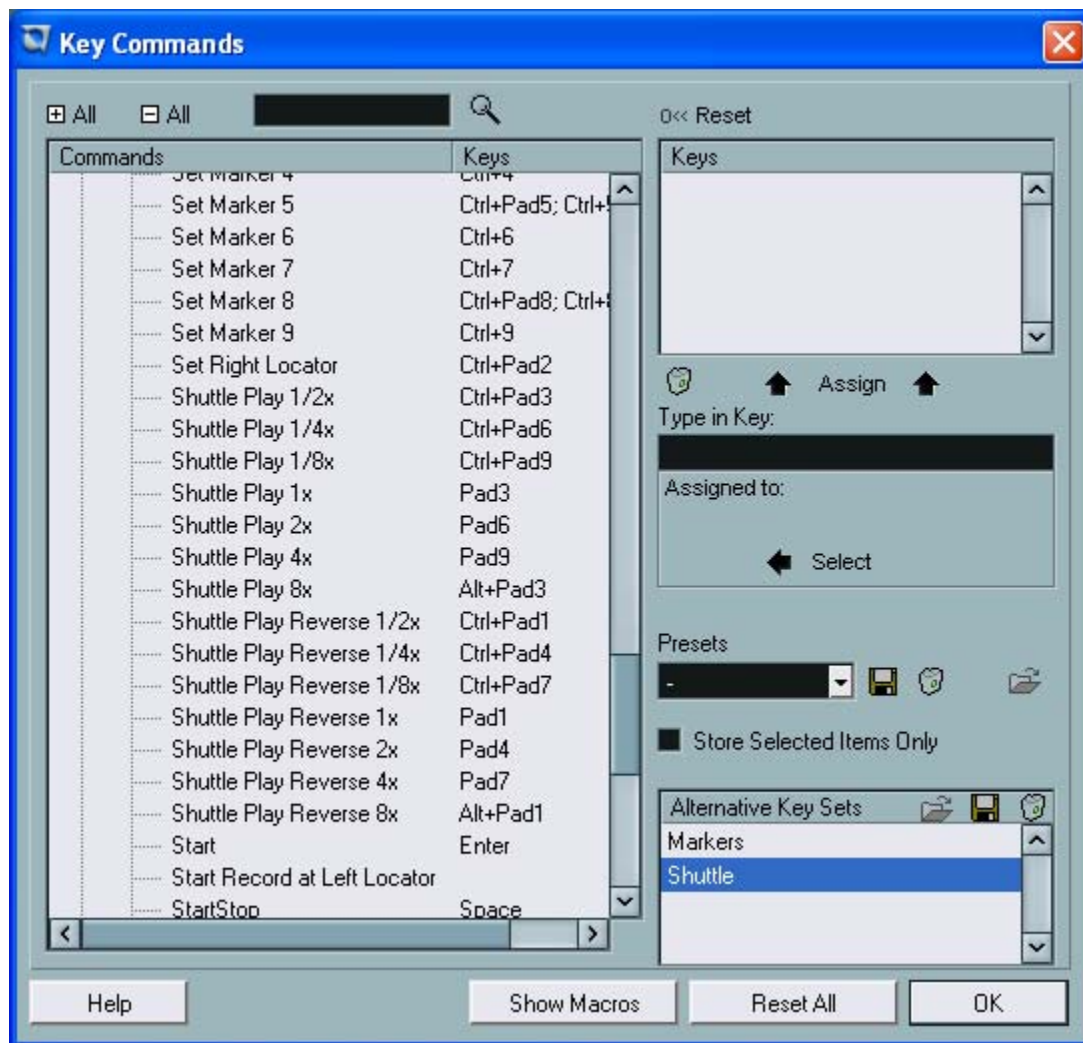


Fig. 1

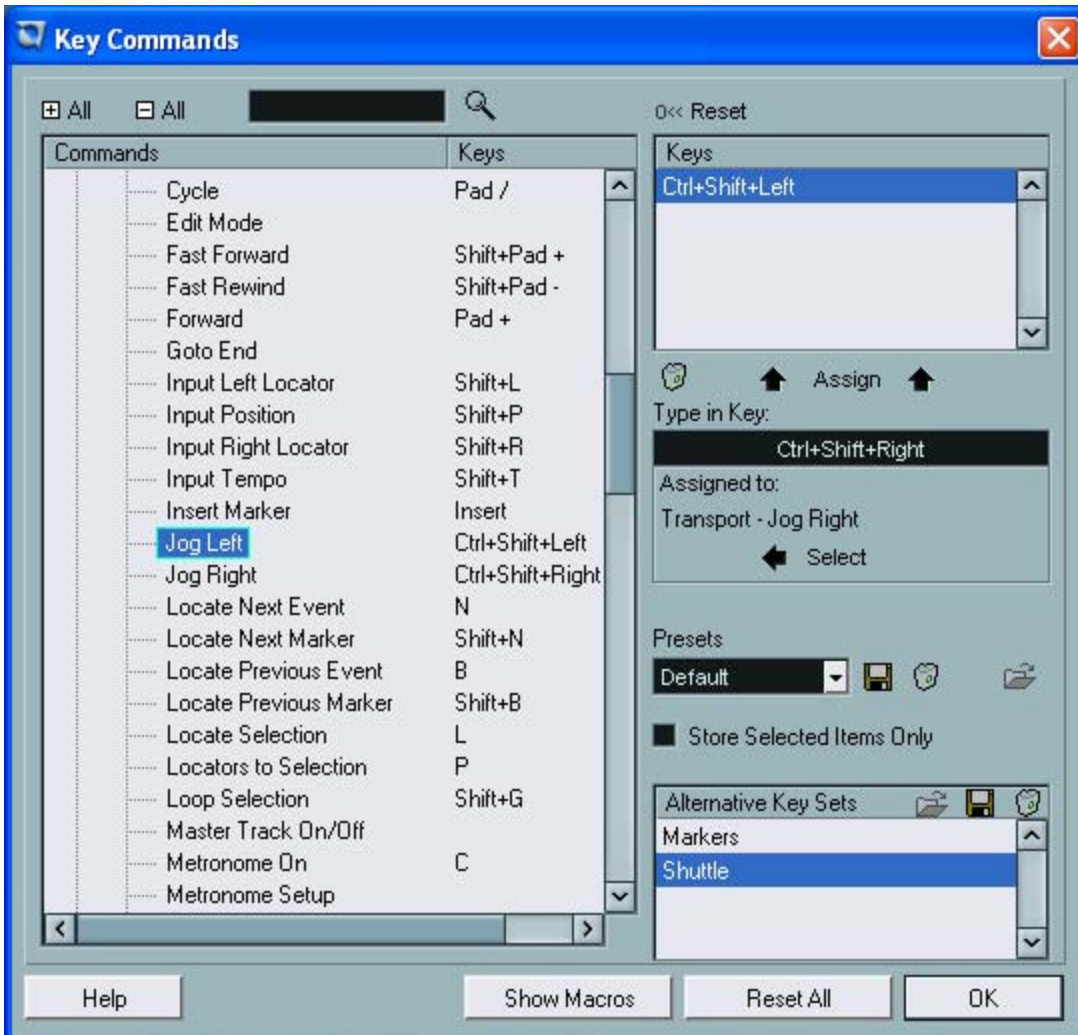


Fig. 2