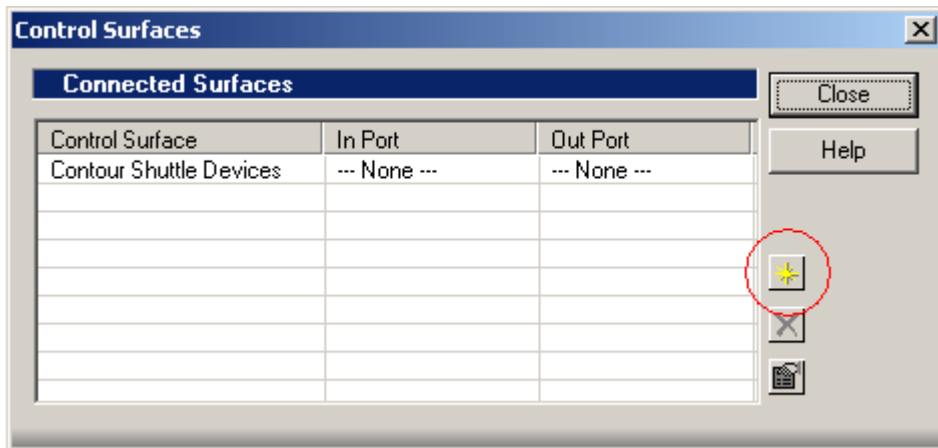


Contour Design Inc. Control Surface Module V 2.0 for Cakewalk Sonar

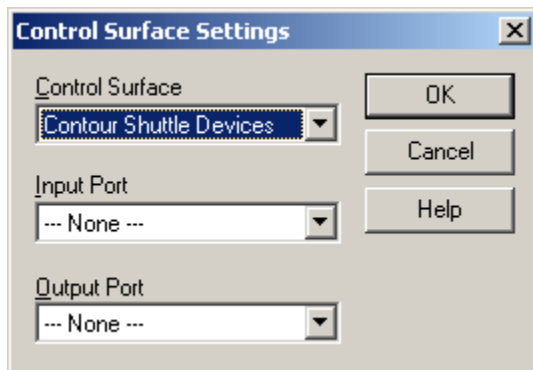
The Cakewalk Sonar control surface module version 2.0 is a standard component of our Windows driver, versions 2.6 and greater. Although the module is automatically loaded on to the computer during the driver installation process, the Sonar application must be configured to recognize it. Once the control surface module is recognized, it grants access to new features and functionality available across the entire line of our shuttle devices. New features include scrolling in different resolutions, audio scrubbing, timeline zooming, parameter adjustment, and interface navigation, all controlled with the precision of your with the jog/shuttle!

Setup Instructions

1. Install Cakewalk Sonar 3 if it is not installed.
2. Download and install the Windows shuttle driver at:
http://www.contourdesign.com/shuttlepro/shuttle_downloads.htm#win
3. Launch Cakewalk Sonar 3.
4. From the Options menu choose Control Surfaces.
5. Click the “Add new Control Surface” button.

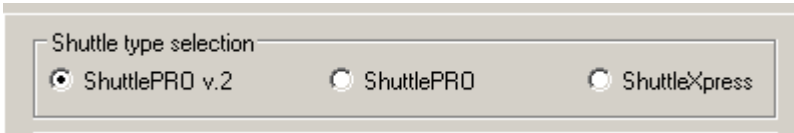


6. From the Control Surface menu choose “Contour Shuttle Devices” and click OK.
7. Select Close to close the Control Surfaces window.

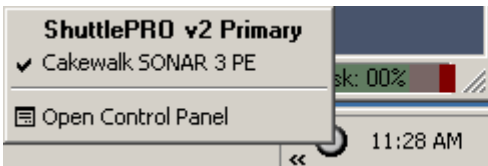


Using the Module

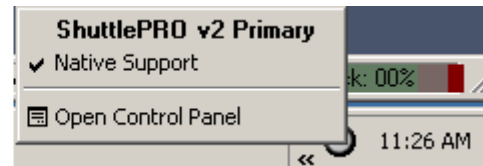
Launch Cakewalk Sonar. From the Tools menu choose Contour Shuttle Devices, and Select the shuttle device you are using from the Shuttle type selection options. Your shuttle device is now ready to use.



There are two modes available for using your shuttle device: the Application Setting mode, and the Native Support mode. In the Application Setting mode the shuttle device is controlled through the Contour Shuttle Device Configuration control panel. In Native Support mode the shuttle device is controlled through the module. When you select your shuttle device from the Shuttle type selection option in the module, the shuttle driver switches from the Application Setting mode, to the Native Support mode. Single clicking on the Shuttle Helper icon located in the Windows Tray bar is a quick way to check which mode your shuttle device is currently in.



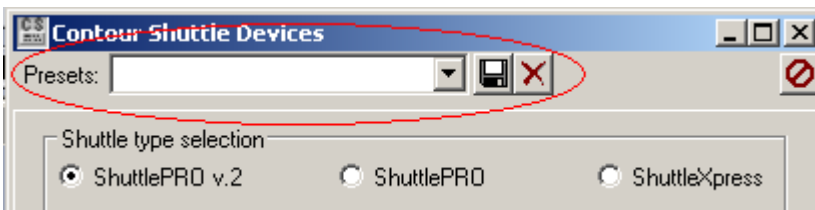
Application Setting Mode



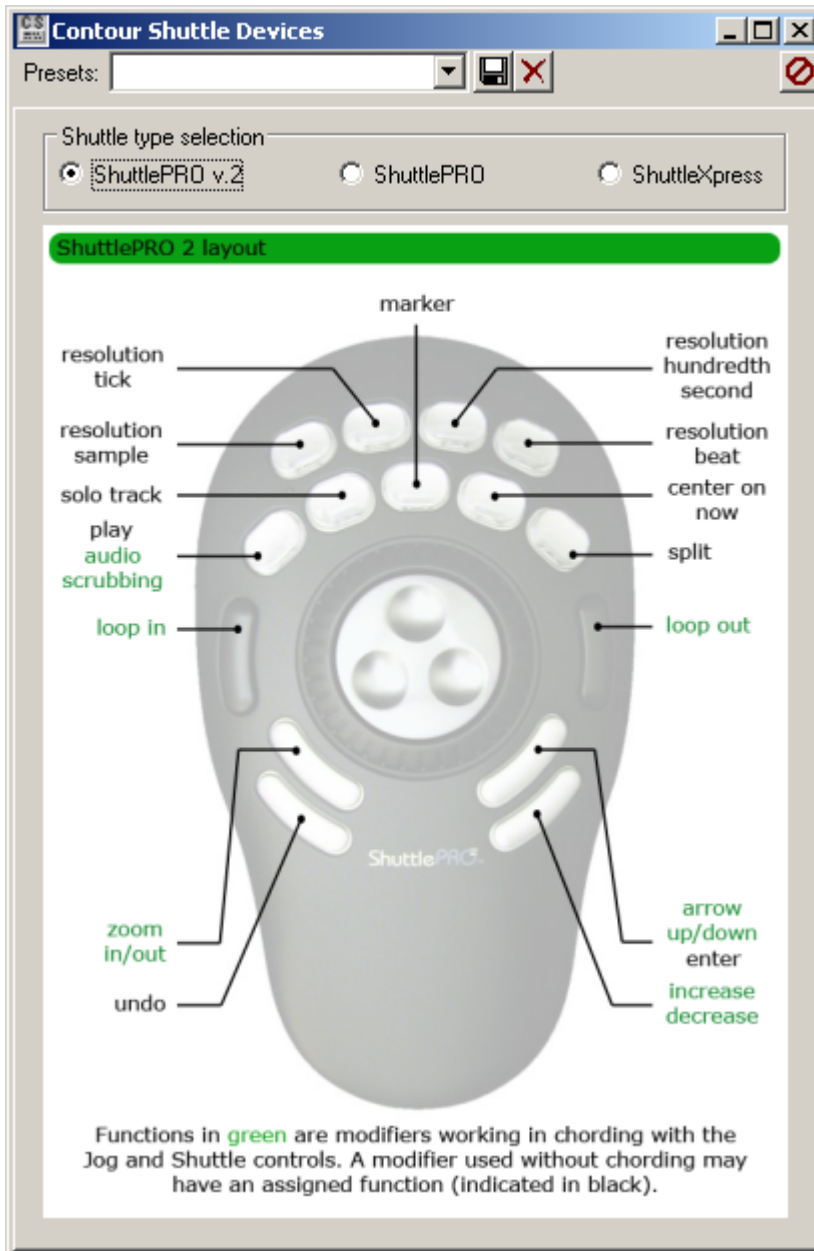
Native Support Mode

Selecting a shuttle device other than the one currently connected effectively disables the control surface module. By disabling the module, you are switching back to the Cakewalk Sonar application setting. This setting is programmable using the Contour Shuttle Device Configuration control panel. If you would like to customize the features of the shuttle device, disable the module, and modify the Cakewalk Sonar application setting from within the Contour Shuttle Device Configuration control panel. However you will not have access to many of the new advanced features of the module.

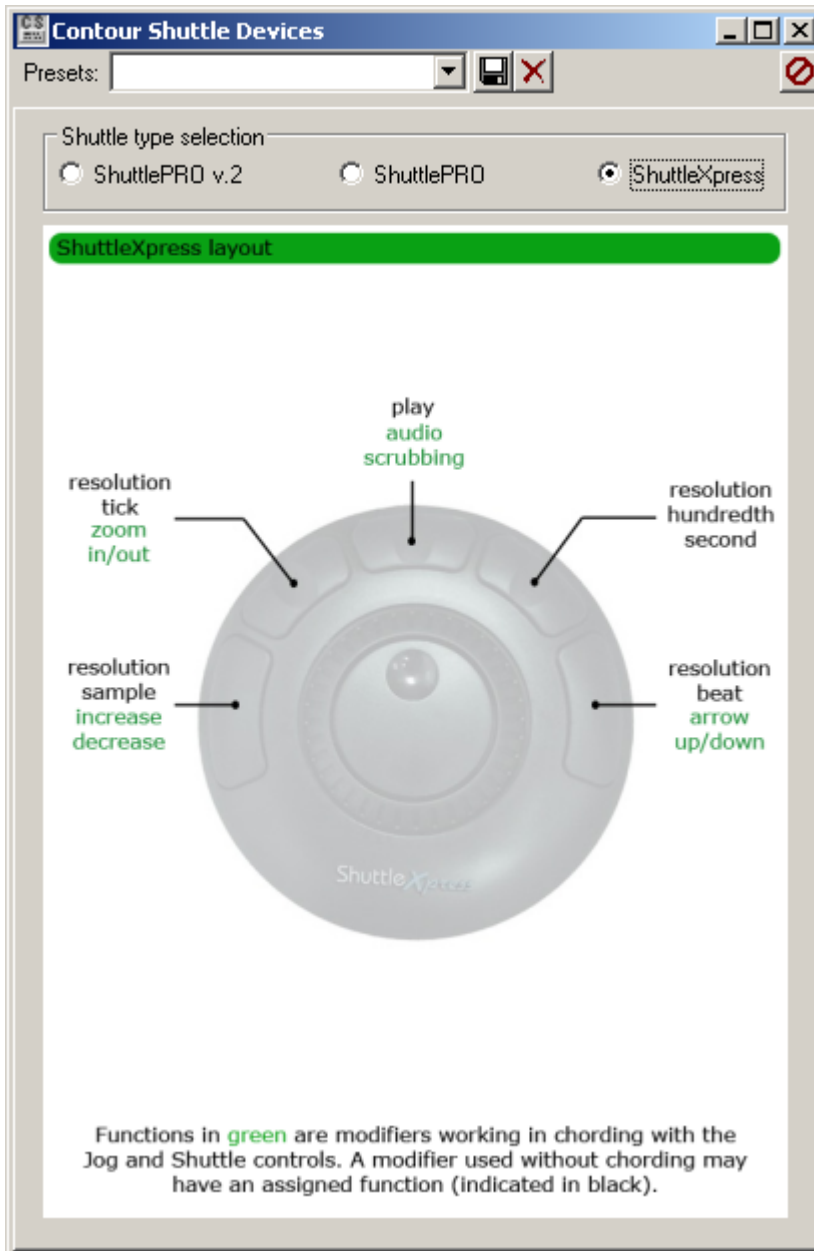
The Presets portion of the module is not functional. Although you can create and save presets, they have no function or effect.



ShuttlePRO V2 Layout



ShuttleXpress Layout



ShuttlePRO Layout

